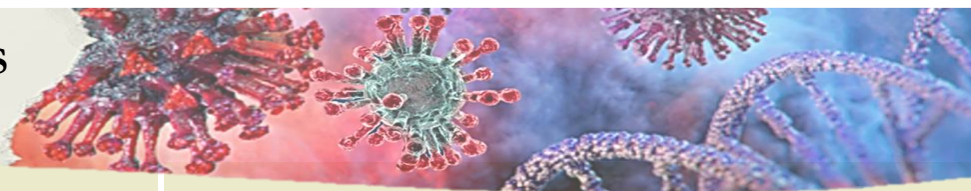




UPDATE ON CORONAVIRUS (COVID-19) MAY 2020



Summary of Coronavirus outbreaks

The global community is racing to slow down and eventually halt the spread of COVID-19, a pandemic that has claimed thousands of lives and affected a million plus people worldwide.

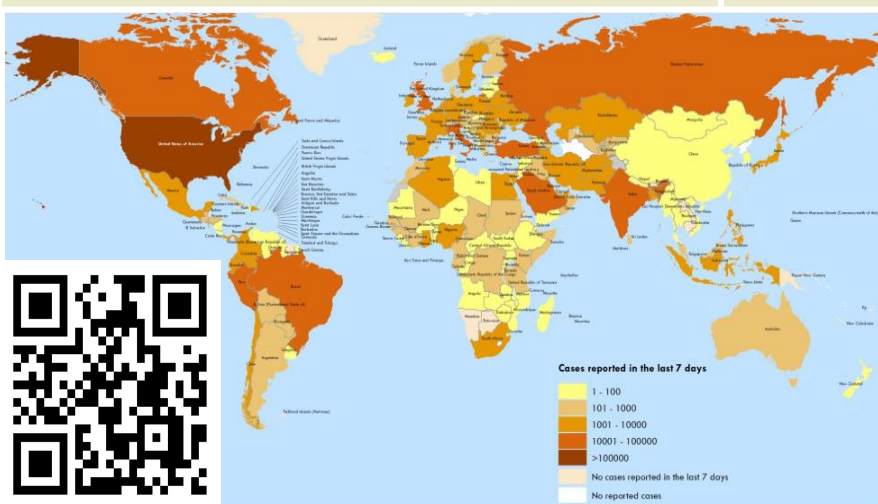
On 15th May, according to the World Health Organization (WHO), the COVID-19(Coronavirus) pandemic has already infected **4.3** million people in **183** countries, of whom over **300,000** had died. Out of the infected people, over than **1.5** million have already recovered and more than **299,333** people have died.

Since January, WHO has been working with researchers from hundreds of institutions to develop and test vaccines, standardize trials and regulatory approaches on innovative trial designs and define criteria to prioritize vaccine candidates. The Organization has prequalified diagnostics that are being used all over the world, and more are in the pipeline. Additionally, WHO is coordinating a global trial to assess the safety and efficacy of four therapeutics against COVID-19.

On April 24th 2020, Heads of state and global health leaders; through a virtual meeting, made an unprecedented commitment to work together to accelerate the development and production of new vaccines, tests and treatments for COVID-19 and ensure equitable access worldwide.

Currently, USA is still ranked highest in terms of people affected by the pandemic with **1.5** million cases confirmed and **89,932** deaths recorded. In terms of mortality, the USA followed by the United Kingdom and Italy have registered the highest number of deaths.

Figure 1: Number of confirmed COVID-19 cases reported in the last seven days by country, territory or area, 30 April to 6 May 2020



COVID-19 in Africa

A steady increase in the number of cases has been observed in Africa since the first case of coronavirus (COVID-19) was reported on 25 February 2020 in Algeria. All States have since been affected, with the exemption of Comoros and Lesotho where there have been no official reports of confirmed.

According to the statistics from the WHO, as of 19th May 2020, a cumulative total of **86,721** confirmed COVID-19 cases with **2,787** deaths reported in **54** countries. The most affected countries are: South Africa with (16,433cases), Egypt (12,764cases), Algeria (7,201Cases), Morocco (6,952cases), Nigeria (6,175) Ghana (5,735 Cases), and Cameroon (3,529cases).

For confirmed case in countries neighbouring Uganda, Kenya has the highest number (912) of confirmed cases followed by Tanzania (509),Rwanda(297),D.R.Congo(412)and South Sudan(290) with the least case. .

COVID-19 outbreak in Uganda

Uganda confirmed its first case of COVID-19 on 21st March 2020. According to the Ministry of Health (MoH) statistics on May 17th 2020, a cumulative total of (248) confirmed cases of Coronavirus (COVID-19) were reported in 17 districts namely ;Tororo, Rakai, Wakiso, Kampala, Amuru, Busia, Masaka, Kayunga, Hoima, Masindi, Kalangala, Iganga, Adjumani, Ntungamo, Mpigi, Lwengo and Kyotera.

Tororo (78), Amuru (63) and Rakai (57) districts have reported the highest number of the confirmed cases to date. Border districts have reported more confirmed cases amongst trans-border truck drivers at Points of Entry (POEs). The cumulative number of foreign truck drivers who have tested positive for COVID-19 in Uganda is 137. Of these, 24.8% (34/137) truck drivers have returned to their respective countries. The cumulative number of recovered patients is sixty three (63) out of the 227 (27.7%) confirmed cases of COVID-19 (Coronavirus) in Uganda.

The Ministry of Health in collaboration with other government ministries, agencies and departments and districts continue to strengthen the COVID-19 outbreak response mechanisms.

In the Uganda Gazette No. 29, Volume CXIII, dated 8th May, 2020, a regulation was published, measures were released and wearing masks in public became mandatory.

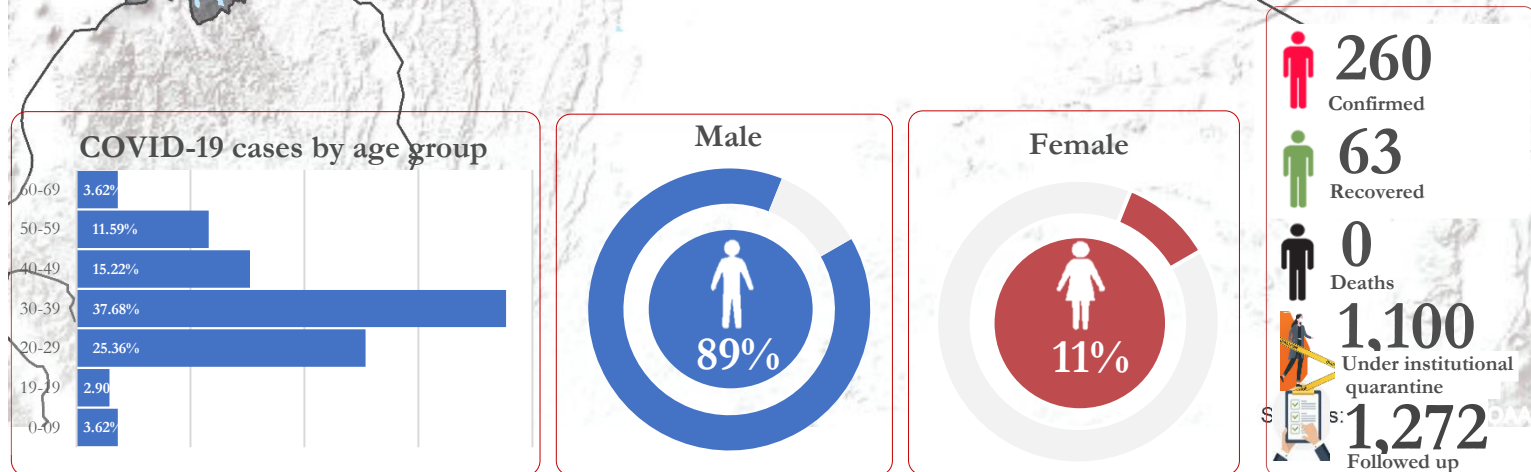
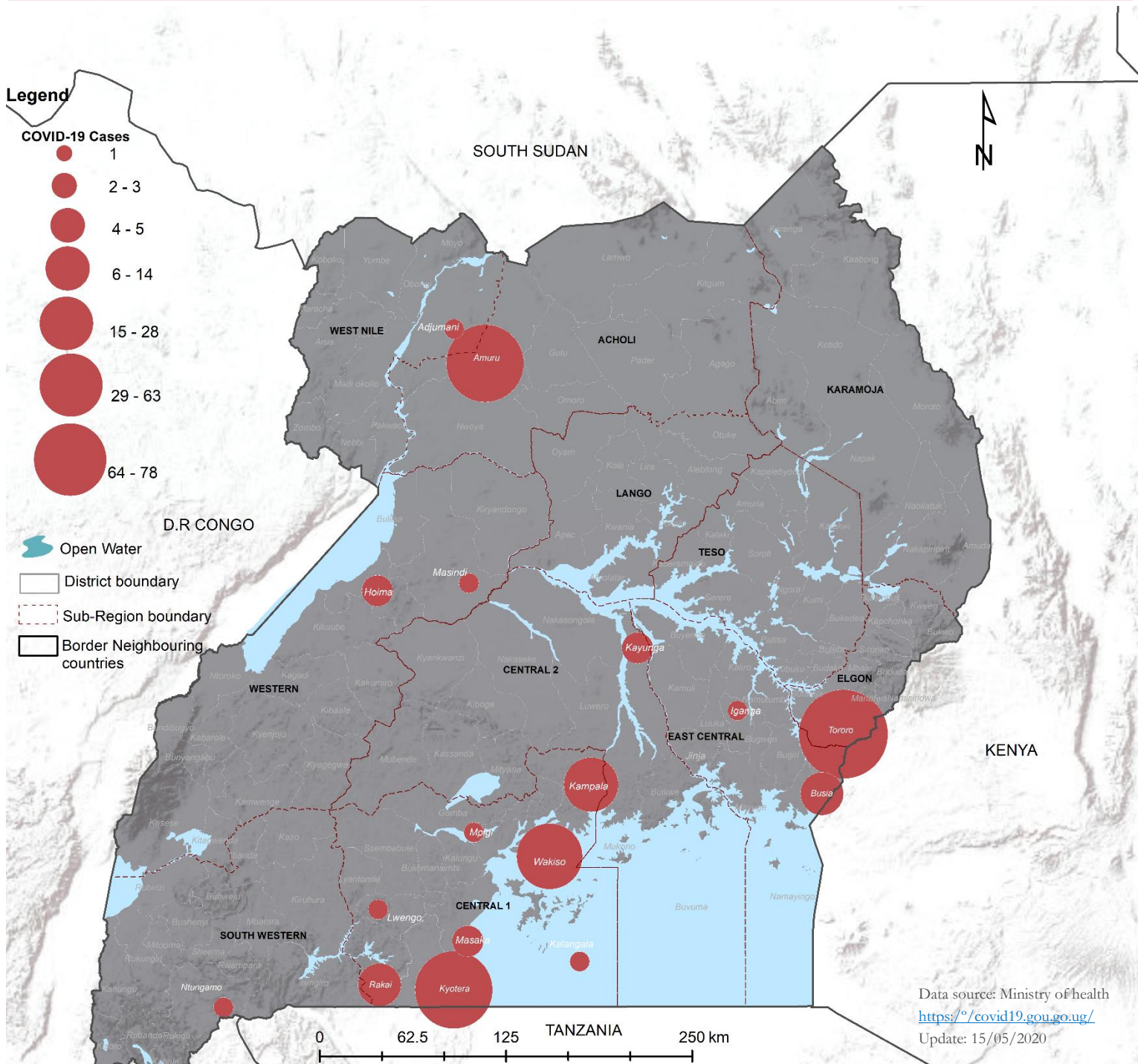
The public is advised to remain vigilant and calm but refrain from spreading false rumours. In case of an alert or suspected case, report to the nearest health facility or call our toll-free lines 0800100066 or 0800-203-033 or the following officers- Mr. Atek Kagerita on 0782 909 153 or Dr Allan Muruta on 0772 460 29.



U - NIEWS

Uganda National Integrated Early Warning System – Monthly Bulletin

CURRENT STATISTICS COVID-19 -UGANDA

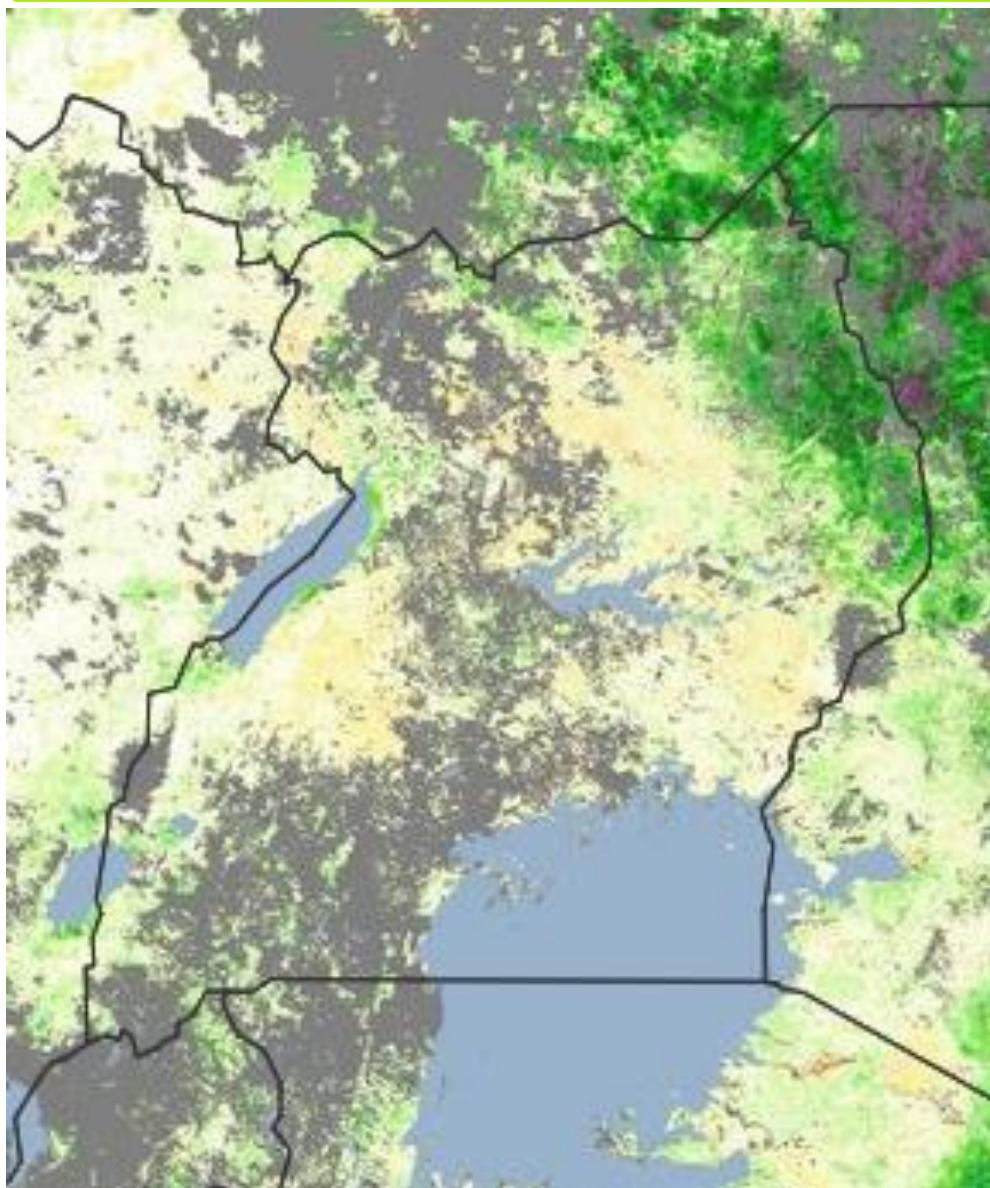




U – NIEWS

The Official Government of Uganda Inter- Ministerial/Agencies
Monthly National Integrated Multi-Hazard Early Warning Bulletin

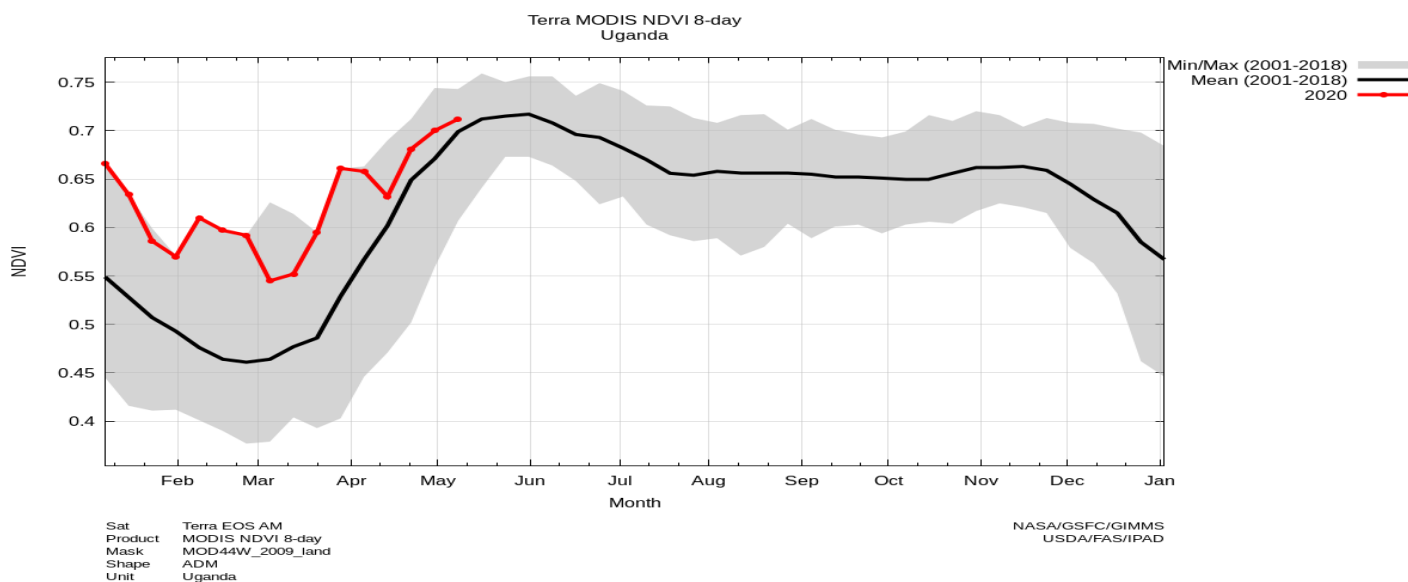
HIGHLIGHTS—NDVI ANOMALY (APRIL 30th TO 05th MAY 2020)



The figure beside represent the Normalized Different Vegetation Index (NDVI%) anomaly for the period of 30th April to 5th May 2020

The green color represents areas where conditions are “above normal.” The light green color represents areas where conditions are better than “normal”. The yellowish brown areas represent areas where the vegetation conditions are near normal. Gray areas are areas where no data was collected due to cloud cover.

The chart below complements the data represented on the map showing the current vegetation conditions. The red line represents the average conditions and compares with the average conditions (black line) for the same period. The grey area shows how values tend to spread from the mean (min/max). For the country as a whole, current conditions were aligned with the long-term maximum deviation from the above-average.





U – NIEWS

Uganda National Integrated Early Warning System – Monthly Bulletin

MAY TO JUNE 2020 SEASONAL RAINFALL OUTLOOK OVER UGANDA

South and Central Western Uganda

South Western: Kisoro, Kabale, Rubanda, Rukiga, Rwampara, Kazo, Rukungiri, Kanungu, Ntungamo, Mbarara, Kiruhura, Isingiro, Ibanda, Kitagwenda, Bushenyi, Buhweju, Mitooma, Sheema, Rubirizi and Kasese districts. **Above average rainfall is expected.**

Central Region and Lake Victoria Basin

Western areas of Central region: Nakasongola, Luvero, Kyankwanzi, Kakumiro, Kasanda, Nakaseke, Kiboga, Mubende, Sembabule, Western Masaka, Lyantonde, Kyotera and Rakai districts. **Near normal rainfall is expected**

Central and Western Lake Victoria region: Kalangala, Kampala, Wakiso, Eastern Masaka, Lwengo, Mpigi, Butambala, Kalungu, Bukomansimbi, Gomba, and Mityana districts. **Above average rainfall is expected.**

Eastern areas of Central region: Mukono, Buikwe, Kayunga, Buvuma districts. **Near average to above average rainfall is expected (slight tendency).**

Eastern Lake Victoria and South Eastern: Jinja, Mayuge, Kamuli, Iganga, Bugiri, Namayingo, Luuka, Namutumba, Buyende, Kaliro, Bugweri, Busia and Tororo districts.

Near average rainfall is expected slight tendency to above average rainfall.

Northern region

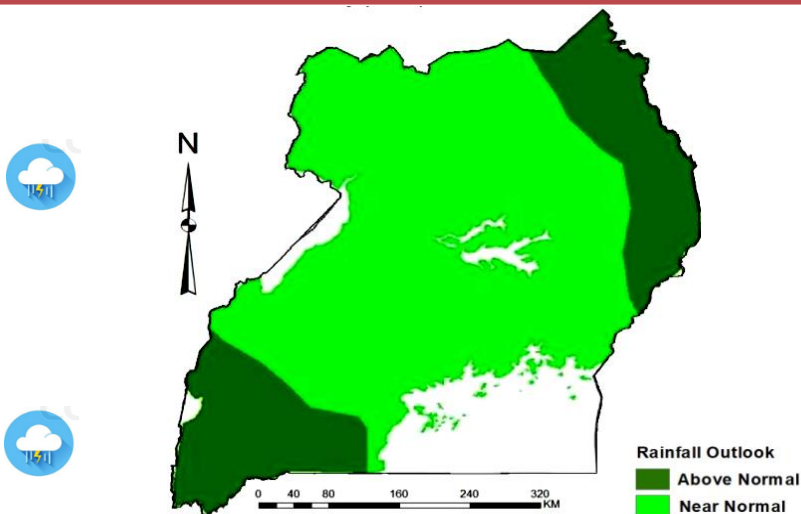
North Western: Arua, Maracha, Moyo, Obongi, Madi Okollo, Zombo, Nebbi, Pakwach, Yumbe, Koboko, Terego and Adjumani districts. **Near average to above normal rainfall is expected.**

Central Northern Parts: Gulu, Omoro, Lamwo, Nwoya, Amuru, and Oyam districts. **Near normal with slight tendency to above normal rainfalls is expected.**

Southern eastern areas of northern region: Amolatar, Lira, Alebtong, Pader, Ouke, Kitgum, Agago, Kole, and Dokolo districts. **Near normal with tendency to above normal rainfalls is expected.**

North Eastern Region: Katakwi, Amuria, Moroto, Kotido, Nakapiripi Abim, Napak, Kapelebyong, Nabilatuk, Karenga, Amudat, Kalenga, and Kaabong districts. **Above average rainfall is expected (high chance).**

Eastern Central: Pallisa, Budaka, Kibuku, Butebo, Mbale, Sironko, Manafwa, Namisindwa, Bududa, Kapchorwa, Kumi, Kalaki, Kaberamaido, Soroti, Serere, Butaleja, Bulambuli, Kween, Bukwo, Bukedea and Ngora districts. **Above normal rainfall is expected (high chance)**



SEASONAL RAINFALL OUTLOOK (MAY 2020) OVER UGANDA

Lifesaving: Floods, Landslides, Storm-winds and Lightening Disaster Alert

Since January, the country has experienced continuous rainfall causing flooding and landslides in some parts of the country. Areas around the shores of L. Victoria, Albert, Kyoga and Edward have been submerged, leaving many households displaced. Other areas downstream have been affected by the rising water levels.

The General Public is informed that the rains will continue to be heavy and above normal in several parts of the country.

Floods and landslides are expected in Elgon, Rwenzori and Kigezi Sub regions.

Many parts of the country will experience strong winds and lightning; fishermen, especially on Lake Victoria, should adhere to safety and lifesaving measures.

People should not be caught unprepared!

Those living near river banks and on steep slopes should shift to homes of relatives and friends in safer locations | People should clear drainage channels near their homes and workplaces | People should reinforce their roofs and walls where necessary | People are strongly advised not to walk or to allow a driver or boda-boda-rider take them through flooded road sections or bridges even if when the floods appear very low below the knees or rim of the vehicle. | Store enough food and firewood to last three months | Take extra care of children, the elderly and other vulnerable persons during the next three months | We advise people who live in areas at high risk of landslides to move to a host family in safe areas.

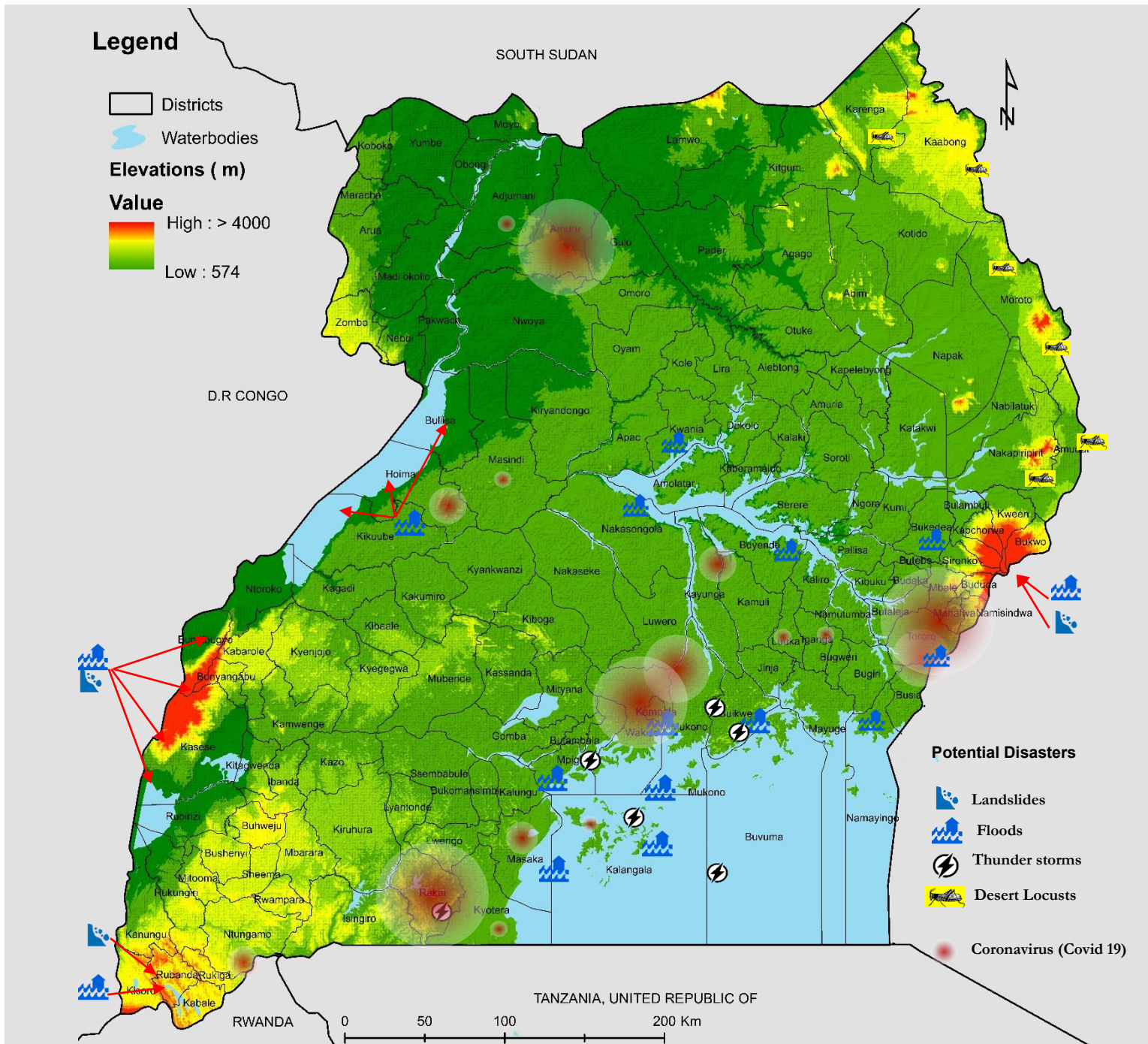
Desilt drainage systems especially in urban areas | Dig/ Open drainage channels around households and gardens | People in flood prone areas are advised to move from low lying areas to high lying places towards peak of the rains | Sensitize the public to use rubber shoes/materials during rains | Early prepositioning of seed and other agro/livestock-inputs in/or near agricultural areas | Activate and or establish disaster management committees at the local levels. | Monitor signs of landslides like cracks, saturated soils, leaning trees, and report to the Authorities | Install lightning arrestors in public premises such as schools, churches, hospitals | Avoid standing in open space especially during heavy rains | Avoid areas with tall unsafe structures like those under construction and standing under the trees. | Avoid using phones during rain | Emergency rescue teams should carry out surveillance.



U - NIEWS

Uganda National Integrated Early Warning System – Monthly Bulletin

MULTI-HAZARD EARLY WARNING PROBABILITY MAP – MAY/ JUNE 2020



Early Warning for Hydro-Meteorological and Geophysical disasters Warning!

- According to the Uganda National Meteorological Authority (UNMA), there is an increased likelihood of near normal to above normal rainfall in most of South Western, Western, Eastern and L.Victoria basin. Peak rainfall is expected between early to mid-May. Chances of landslides/mudslides are very likely to occur over prone mountainous areas of Elgon, Rwenzori and Kigezi highlands among others. Increased rainfall might cause high risks of flooding especially in low lying areas and urban centres with poor drainage systems;
- All people staying on the steep slopes of the mountainous areas are advised to move to safer areas. Those near lake shores and river banks are strongly advised to relocate.

Biological disaster Warning!

- Currently, 203 cases of coronavirus (COVID-19) have been registered in the country in 17 districts. We strongly recommend social distancing, so people should be safe at home, avoiding the risk of contact.
- Since the middle of April 2020 until now the number of foreign truck drivers who have tested positive for COVID-19 in Uganda is 105. This is 51 % of the total of confirmed cases. Considering this situation of exponential increase, we advise the general public to avoid physical contact with truck drivers and for health authorities to continue to strengthen the surveillance of border checkpoints.



U – NIEWS

Uganda National Integrated Early Warning System – Monthly Bulletin

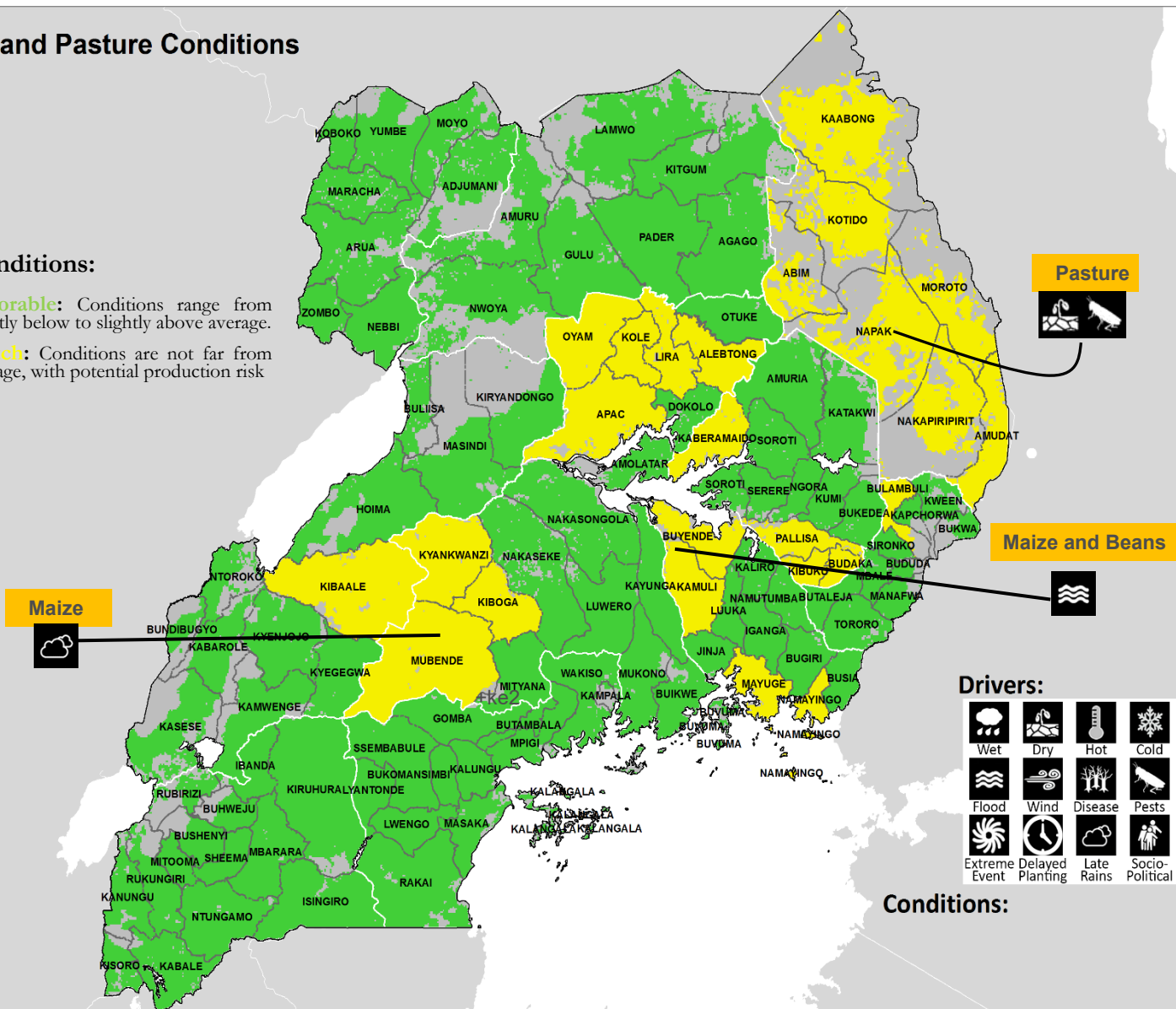
CROP & PASTURE CONDITIONS MAP OF UGANDA

Crop and Pasture Conditions

Conditions:

Favorable: Conditions range from slightly below to slightly above average.

Watch: Conditions are not far from average, with potential production risk



Source: Crop Monitor of Uganda. This crop conditions map synthesizes information for selected crops and pasture as of 14th May 2020. Crop conditions over the main growing areas are based on a combination of national and regional crop analysts' inputs along with remote sensing and rainfall data.

Early Warning for Regions!

Central 1, West Nile, and South Western: Favourable crop conditions persist in the region due to above average rainfall received. Major crops are flowering especially maize. Early harvesting of beans has been reported in some districts of Kabaale and Kisoro.

Central 2: Favourable crop conditions persist in the region except for Mubende, Kiryandongo, Kiboga and Kibaale districts that are under watch. Delayed onset of rainfall and flash floods due to increased heavy rainfall could account for the watch crop condition. First weeding of the juvenile crops is underway.

Karamoja: The region is under watch pasture conditions due to early onset of rainfall. However, favourable conditions are expected with full onset of rainfall in June-July. Desert locusts still pose threats to crops as they are still hatching in Kenya and Ethiopia. Farmers are advised to prepare their land early.

Early Warning for Regions!

East central: Generally, the region is under favourable crop conditions except for Kamuli, Mayuge, Namayingo and Buyende districts that are under watch. Above average rainfall across the region has resulted into flash floods and increased water levels of Lake Victoria and Kyoga thus creating waterlogging conditions for crops.

Teso: Favourable crop conditions are recorded throughout the region except for Kibuku, Budaka and Pallisa districts that are under watch. Due to the heavy rains received from the start of the season, water levels in the rivers and lakes have increased, resulting into flooding in some areas.

Elgon: The region is under favourable crop conditions except Bulambuli district, which is under watch. A mixture of floods, hailstorms and landslide due to above average rainfall best explains the observed crop conditions. Most food crops especially maize is under vegetative and early flowering stage. Second weeding is ongoing.

Western: Favourable crop conditions exist in the region, except for Kibaale district, which is under watch. Average rainfall largely accounts for the observed crop conditions. Weeding and planting is still underway.



U – NIEWS

Uganda National Integrated Early Warning System – Monthly Bulletin

DISASTER EARLY WARNINGS AND OUTLOOK - 15th MAY- 15th JUNE 2020

BIOLOGICAL HAZARDS

The country has managed to control the infection rate of Coronavirus pandemic (COVID-19), unfortunately due to imported cases by truck drivers, the cumulated cases are now at 203. This has led the government to reinforce measures to halt the further spread of pandemic. The Ministry of Health continues to appeal to the general public to remain calm, but vigilant and practice safety measures.

Avoid close contact with people who are visibly sick with a cold or flu-like symptoms (fever, cough, sneezing). | Avoid touching your eyes, nose, and mouth with unwashed hands | Wash your hands often with soap and running water for at least 20 seconds. | If soap and water are not available, use an alcohol-based hand sanitizer | Stay home when you experience the above symptoms to avoid spreading illness to others. | Cover your mouth and nose when you cough or sneeze with a tissue, then throw the tissue in the dustbin and wash your hands thoroughly with soap and running water. | Wear a medical mask if you are sick, or if someone around you is sick. | Regularly clean and disinfect frequently touched objects and surfaces such as door handles, table tops and phones.

If you feel **any of these signs and symptoms (fever, running nose (flu), cough, general weakness, difficulty in breathing or if the patient develops pneumonia)**, call our toll-free lines on **0800-100- 066** or **0800-203-033** to report any suspected cases of COVID-19.

Alert Level: **Moderate** → **High**

HYDRO-METEREOREOLOGICAL HAZARD - FLOODS

The Intensive and prolonged rainfall has caused a rise in water levels of major lakes and river, resulting flooding in several areas of the country. The recent seasonal weather forecast for March to May 2020 issued by UNMA predicted near to above normal rainfall in different area of the country. The predicted rainfall may further raise the water level of Lake Victoria, Albert, and Kyoga, River Nile and other rivers. We strongly advise people who live near the lakeshores and river banks mainly those living in the houses located in low elevations to move to safer areas. Additionally, episodic flash floods might be experienced, people need to be more vigilant especially.

Alert Level: **Moderate** → **High**

METEREOREOLOGICAL HAZARDS

Most parts of the country might experience strong winds and lightning. We advise people to reinforce their roofs and walls where necessary.

Cases of lightning are still probable in most areas of the country hence contingency measures should be put in place to avoid loss of lives and property

Alert Level: **Moderate** → **High**

GEOPHYSICAL HAZARDS - LANDSLIDES

Landslides are expected, and we strongly advise people who live on the hills and steep slopes to be vigilant and cautious, especially in the Elgon, Rwenzori and Kigezi highland areas.

Alert Level: **Moderate** → **High**

TRANSPORT / TECHNOLOGICAL HAZARDS

Transport Accidents: Any Location

Fire: Any Location

Electrocution: Any Location

Alert Level: **Moderate** → **High**

Disaster statistics for the month of April 2020

BIOLOGICAL HAZARDS (based on Weekly EPI Bulletins by MoH)

A high number of cases of Malaria, Typhoid fever, Animal bites, and SARI were reported in different parts of the country.

Reported cases: Malaria	(119,131)	Dead: (34)
Typhoid fever	(1,138)	(1138)
Animal bites	(225)	(0)
SARI	(174)	(0)

Source: EPI, MoH, April 2020

TRANSPORT/ TECHNOLOGICAL HAZARDS

Fire, drowning, fatal road accidents occurred across the country.

Deaths: 16 Injured: 21 Affected: 37

Source: NECOC/OPM, Uganda Police Force, April, 2020

Floods, landslide and hailstorms update (March to mid-May 2020)

HYDRO-METEREOREOLOGICAL

Floods reported in: Kasese, Bundibugyo, Ntoroko, Nakapiripirit, Tororo, Nakasongora, Wakiso, Mukono, Kisoro, Luwero, Bunyangabo, Kabarole, Busia, Jinja, Rukungiri, Rakai, Masaka, Mbarara/Isingiro, Hoima, Kikuube Kalangala, Mpigi, Gomba, Butambala, Lira, Amolator, Otuke, Nakapiripirit, Apac, Kwanja, Amuria, Katakwi, Serere, Kaberamaido, Kalaki, Kapelabyong, Soroti, Bukedea, Mbale, Kapchorwa, Kyotera, Kabale, Rubanda, Rukiiga and Alebtong.

No of People approximately:

Affected: 176,620 Displaced: 24,335.

Hailstorms reported in: Rwampara, Luwero, Kanungu, Rukungiri, Kamuli, Nakapiripirit, Rubirizi, Ibanda and Kiruhura.

No of People approximately: Affected: 25,436 Displaced: 1,685

Source: NECOC/OPM, and Partners - May 2020

GEOPHYSICAL HAZARD

Landslide | reported in Ntoroko, Isingiro, Kabale, Kween.

No of People approximately: Affected: 39,990 Displaced: 7,370

Source: NECOC/OPM, and Partners - May 2020

U – NIEWS

Uganda National Integrated Early Warning System – Monthly Bulletin

BRIEF UPDATE ON FOOD SECURITY AND MARKET PRICES OF SELECTED CROPS

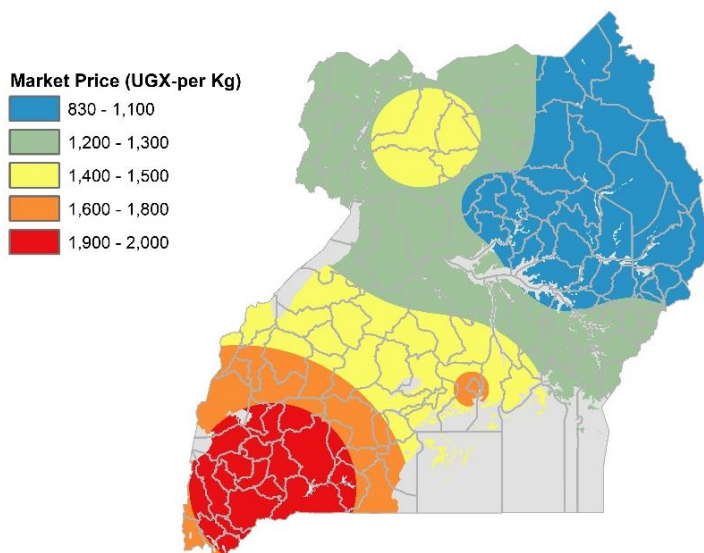


Highlights!

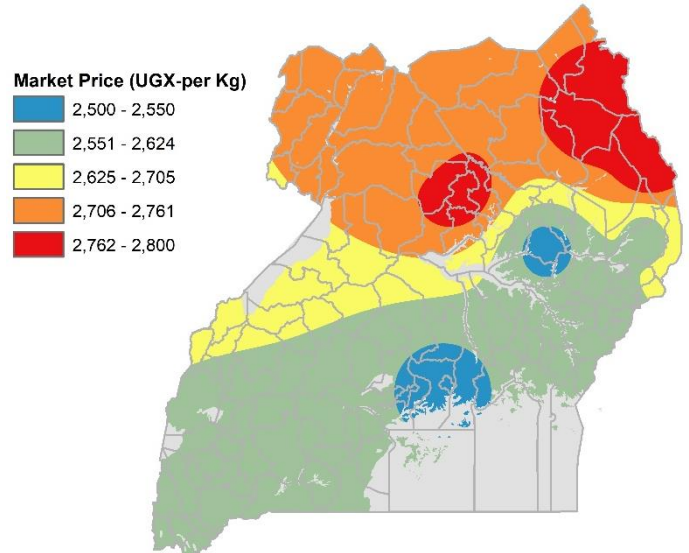
In Karamoja, below-average seasonal incomes coupled with typically high staple food prices, and the absence of the school feeding program are expected to constrain household food access. An increasing number of households are expected to deteriorate to Crisis phase before the harvest in July/August. Given the absence of school feeding at the peak of the lean season, a seasonal increase in the prevalence of under-five acute malnutrition is expected through June/July.

According to FEWS NET, between February and March 2020, there is an observed increase in the retail prices of beans by 2-15 % in the monitored bimodal markets of Lira, Gulu, Kampala, Masindi, Soroti, Mubende, and Tororo. In Arua, prices were stable. In all markets, bean retail prices in March were significantly higher by 33-47% than prices recorded in March 2019, and 31-41 % higher than the five-year average. Sorghum retail prices remained stable between February and March in most bimodal markets except in Mubende, Gulu, and Arua where prices decreased by 8-23 %. However, sorghum prices were significantly higher by 25-71% compared to last years' prices, except in Arua where they were similar. Seasonal agricultural labor opportunities for poor rural households are lower than usual due to the impacts of lockdown measures that have resulted in below-average access to income and reduced purchasing power among those who hire labor.

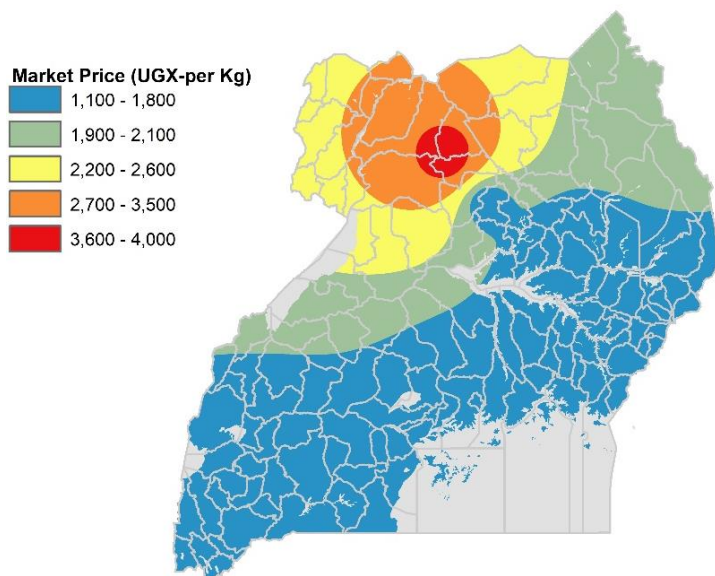
Spatial distribution of Market price of Sorghum — March 2020



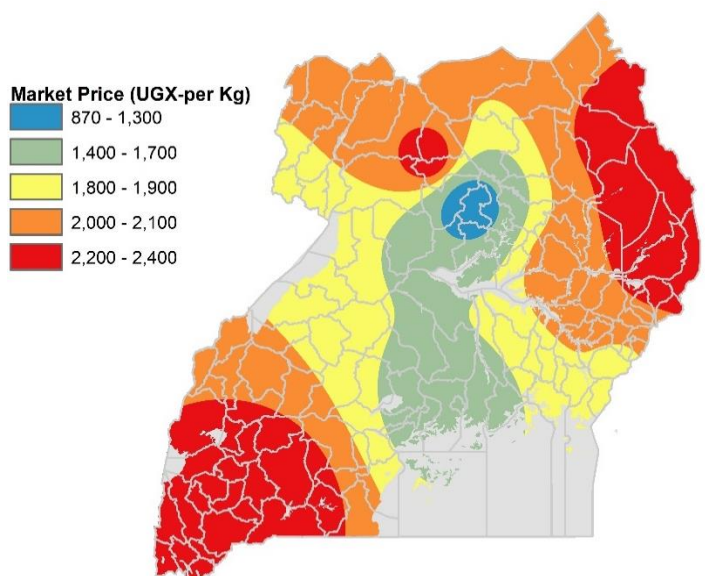
Spatial distribution of Market price of Millet Flour— March



Spatial distribution of Market price of Cassava Flour — March 2020



Spatial distribution of Market price of Maize flour — March 2020

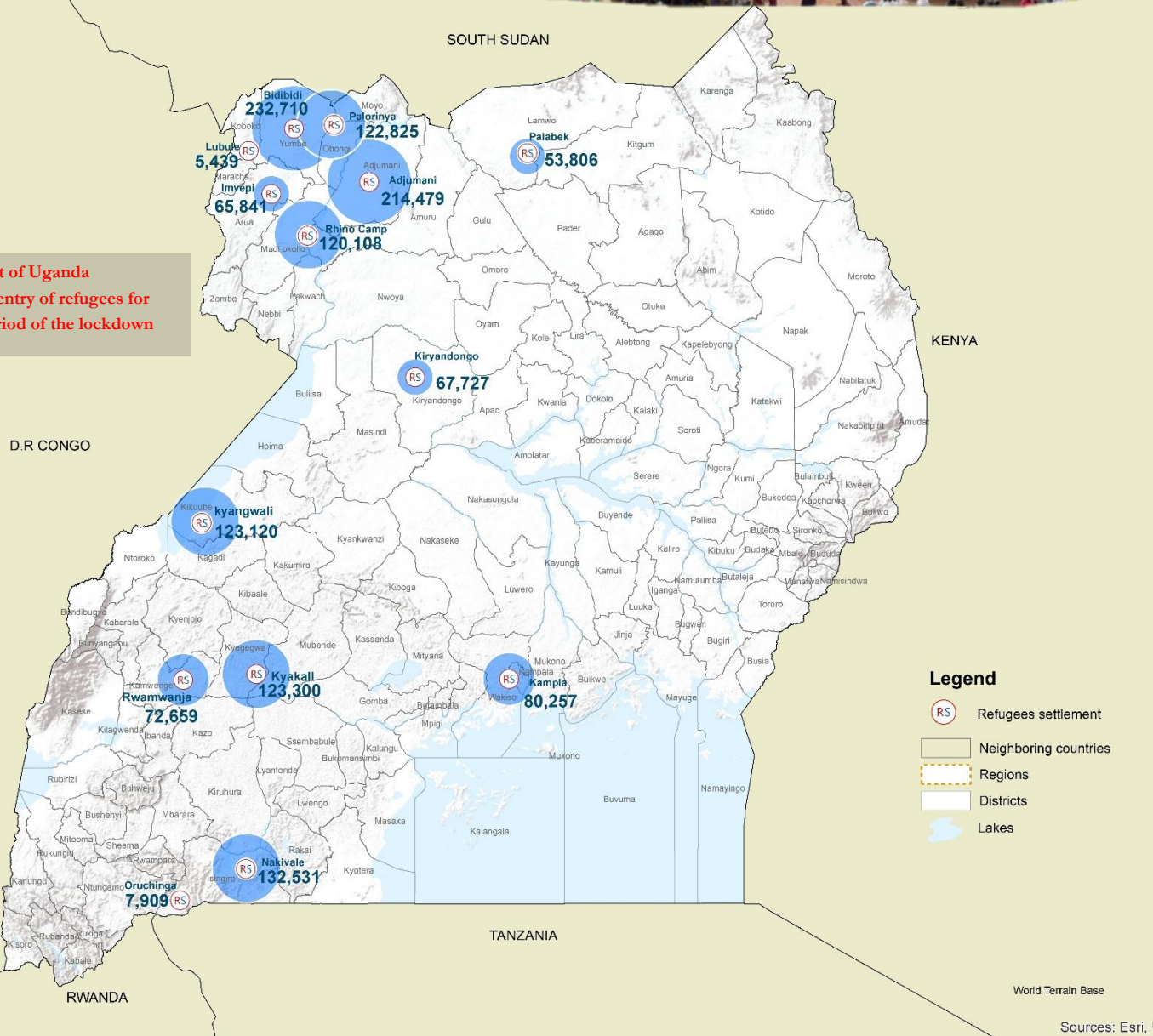




U - NIEWS

Uganda National Integrated Early Warning System – Monthly Bulletin

REFUGEE STATUS OF UGANDA (as of APRIL 31st 2020)

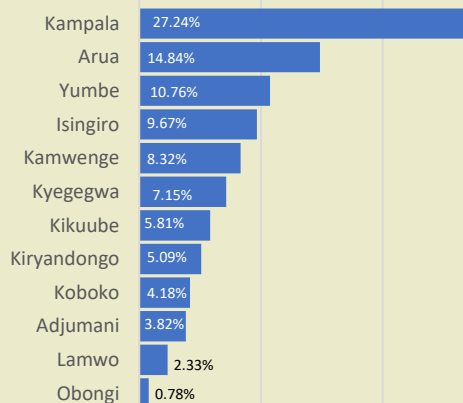


Data Source: UNHCR April 2020

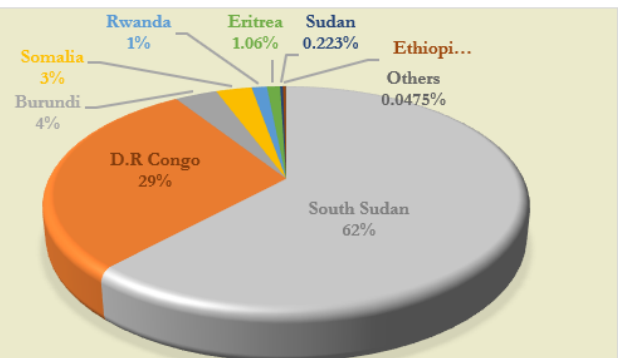
Total refugees and asylum-seekers**

1,423,740

Host population by district



Refugees by country of origin





U – NIEWS

Uganda National Integrated Early Warning System – Monthly Bulletin

National Emergency Coordination and Operations Centre (NECOC)

The Office of the Prime Minister's Department for Disaster Preparedness and Management established the National Emergency Coordination and Operations Centre (NECOC) in October 2014, with the support of United Nations Development Programme (UNDP). Uganda's National Emergency Coordination and Operations Centre (NECOC) is a 24 hour, 7- days a week central facility for early warning dissemination and coordination of emergency and crisis response and recovery action. The NECOC is established under the National Policy for Disaster Preparedness and Management of Uganda (NPDPM) with the purpose of contributing towards the functionality and characteristics that make creation of an integrated and multi-sectoral system approach to planning, preparedness and management of disasters that is fundamental to sustained productivity and socio-economic growth of the country.

Important Note!

The Uganda National Integrated Multi Hazard Early Warning System (U-NIEWS)

U-NIEWS monthly bulletin can be used to understand the conditions of crops and pasture, food insecurity, weather/climate forecast and to determine the anticipated disasters which may occur in the days to come while providing the disaster and humanitarian response status update based on monthly statistics. The information in this bulletin can be used as baseline information for planning processes while detail information may required for respective locations through relevant local and technical agencies for local level planning. For any specific details and information, relevant sources should be contacted using the NECOC website given below. In addition, Sub national level officials are encouraged to re circulate U-NIEWS among the locals including CSO's in their respective districts. The development partners are also encouraged to re circulate this bulletin among their partners, peers and colleagues.

The information provided here is shared by the respective government, UN agencies and non-governmental agencies stationed in Uganda. The Uganda National Integrated Early Warning monthly bulletin is issued on the 15th of every month to notify Ministries, Departments, Authorities, UN Agencies and General public on probable disasters which may occur without warning.

For more details:

Office of the Prime Minister (OPM)

National Emergency Coordination and Operations Centre (NECOC)

5th Floor, Postel Building, Clement Hill Road

P.O Box 341, Kampala Uganda.

Tel No. 0414 342 104

Toll Free Hotline on all Networks:

: 0800 177 777



Photo:

Hon. Musa Echweru, Minister of State for Disaster Preparedness, Management and Refugees during the response to Kasese floods.



Residents of Kasese helping victims of the floods.

